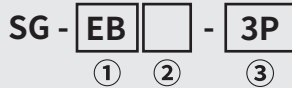


Grounding Bar | Earth Ground

Nomenclature



- ① **Product name**
Earth Grounding Bar
- ② **Type**
-: Single file
2: Double file bending type
3: Double file straight type
- ③ **The number of terminals**
3P ~ 30P



Plated

Description

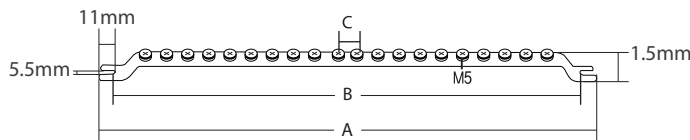
Grounding bars are non-plated products made of 99.9% copper, and can be divided into various types: single file, double file, 3P to 30P. They are manufactured to support the safe grounding of electric facilities.

Product Specifications

Material : Copper 99.9%, Tin-plated
Bolt size : M5 (Single-file) / M4, M5 (Double-file)

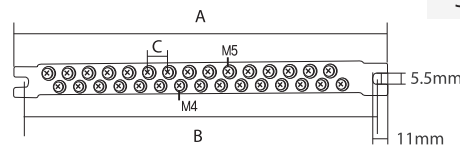
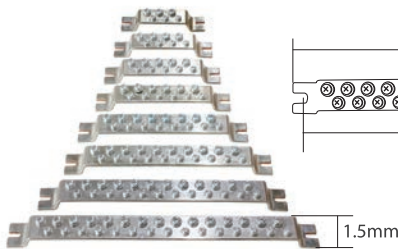
Product certification : **RoHS**

SG - EB



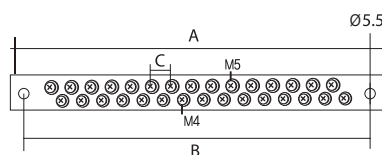
Model	Size(mm)			Size
	A	B	C	
SG-EB-3P	92	75	15	15mm X 3T
SG-EB-4P	107	90		
SG-EB-5P	122	105		
SG-EB-6P	137	120		
SG-EB-7P	152	135		
SG-EB-8P	167	150		
SG-EB-10P	197	180		
SG-EB-12P	227	210		
SG-EB-15P	272	255		
SG-EB-20P	347	330		

SG - EB2



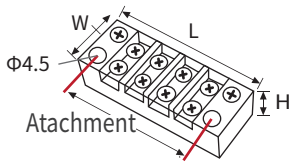
Model	Size(mm)			Size
	A	B	C	
SG-EB2(3)-6P	98.9	81.5	15	25mm X 3T
SG-EB2(3)-8P	113.9	96.5		
SG-EB2(3)-10P	128.9	111.5		
SG-EB2(3)-12P	143.9	126.5		
SG-EB2(3)-16P	173.9	156.5		
SG-EB2(3)-20P	203.9	186.5		
SG-EB2(3)-24P	233.9	216.5		
SG-EB2(3)-30P	278.9	261.5		

SG - EB3



Terminal Block

RoHS



SG-TB-1504

Product Specifications

Rated voltage : 250V / Allowable current : 15A
 Operating temperature : -20°C ~ 70°C / Color : Black

Model	Size (mm) L x W x H	Mounting interval
SG-TB-1502	38x20x14	28mm
SG-TB-1503	48x20x14	38mm
SG-TB-1504	57x20x14	48mm
SG-TB-1506	77x20x14	67mm
SG-TB-1510	117x20x14	107mm

Fixed Bracket

RoHS



SG-B4045

SG-B4090

SG-B6045

SG-B6090

Size (mm)			
SG-B4045	SG-B4090	SG-B6045	SG-B6090

※ Tolerance ± 1~2mm

DC Terminal Block

RoHS



Product Specifications

Color : Gray
 Operating temperature :
 -20°C ~ 70°C

Model	Size (mm) L x W x H
SG-DC-4P	49 x 22 x 26
SG-DC-6P	66 x 22 x 26
SG-DC-10P	99 x 22 x 26
SG-DC-15P	148 x 22 x 26
SG-DC-20P	190 x 22 x 31
SG-DC-25P	232 x 22 x 31

※ Tolerance ± 1~2mm

HC Terminal Block

(Heat-resistant terminal block)

RoHS



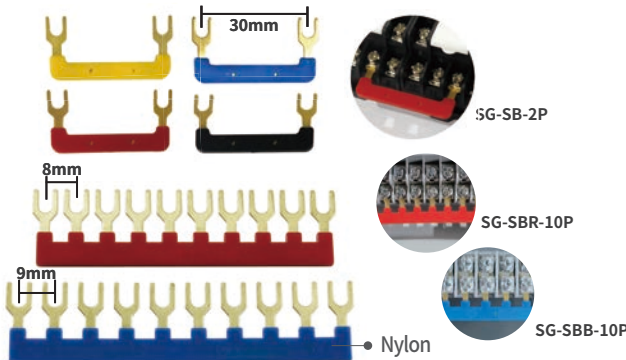
Product Specifications

Color : Ivory
 Operating temperature :
 -20°C ~ 400°C

Model	Size (mm) L x W x H
SG-HC-4P	49 x 22 x 26
SG-HC-6P	66 x 22 x 26
SG-HC-10P	99 x 22 x 26
SG-HC-15P	148 x 22 x 26
SG-HC-20P	190 x 22 x 31
SG-HC-25P	232 x 22 x 31

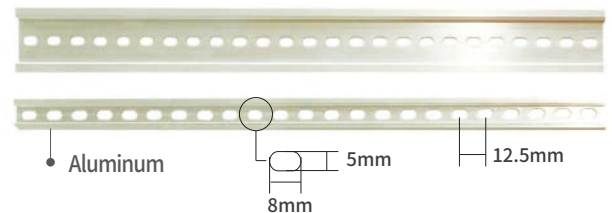
※ 250V, 10Amp

Short Bar



Model	Color	Product Details
SG-SB-2P	Yellow/Blue/Red/Black	For MY-4 relay socket
SG-SBR-10P	Red	For 10A TB- 4P, 4PT, 6P, 6PT, 10PT 15PT, 20PT, 30P, 40P, 50P AL- 4P, 6P, 10P, 12P, 15P, 20P 20PT, 30P, 40P, 50P-S, 50P-L
SG-SBB-10P	Blue	For 15A TB- 4P15, 6P15, 10P15, 15P15, 20P15

DIN - Rail



※ DR-15/35-hole sizes and intervals are identical

Model	Size (mm)	
	Width	Length
SG-DR-15	15	1000
SG-DR-35	35	1000

※ Tolerance ± 1~2mm